

Co-Development of an Intervention for Long-term Care during COVID-19

*Mounir, N.A.& Gallant, N.L.

Introduction

- During the pandemic, Essential Care Partners (ECPs) were denied access to Long-term Care facilities (LTC), contributing to loneliness and social isolation among older adults and the aging population.
- The research team's role was to acknowledge the isolation experienced by older adults and to identify ways to improve their lives during COVID-19 and beyond.

Purpose

- Our aim is to provide an overview of the co-development of intervention for Long-term Care homes during the COVID-19 pandemic in New Brunswick, Canada.
- And to develop an intervention course which will educate ECPs on their roles and responsibilities in LTC and how to engage in Infection Prevention and Control (IP+C) practices.

Methods

1. We collaborated with the Loch Lomond Villa, a Long-term Care home (LTC) in New Brunswick, Canada, to co-develop a virtual intervention training program for Essential Care Partners (ECPs) (See Figure 1).
2. Over the course of 12 months, a committee of experts met monthly with Long-term Care (LTC) essential care partners (ECPs; $N = 2$) and staff members ($N = 3$) (See Figure 2).
- The challenges that were encountered during the COVID-19 pandemic and possible mitigations were discussed.
3. Based on recommendations from Healthcare Excellence Canada (2021), we focused on developing an intervention to ensure that ECPs are aware of Infection Prevention and Control (IP+C) protocols.
- Collaborating with a web developer and a voice actor, we created a virtual interactive training program using software and graphic design platforms.
- An audio-animated virtual course for ECPs in Long-term Care homes was developed, divided into five modules of three to seven minutes each.

Future Research

- Future Research will include looking at the effectiveness of the intervention.
- In the event that the intervention is effective, it will be made available to other Canadian Long-term Care facilities/homes.

Figure 1. IP+C Virtual Training Program Modules Description

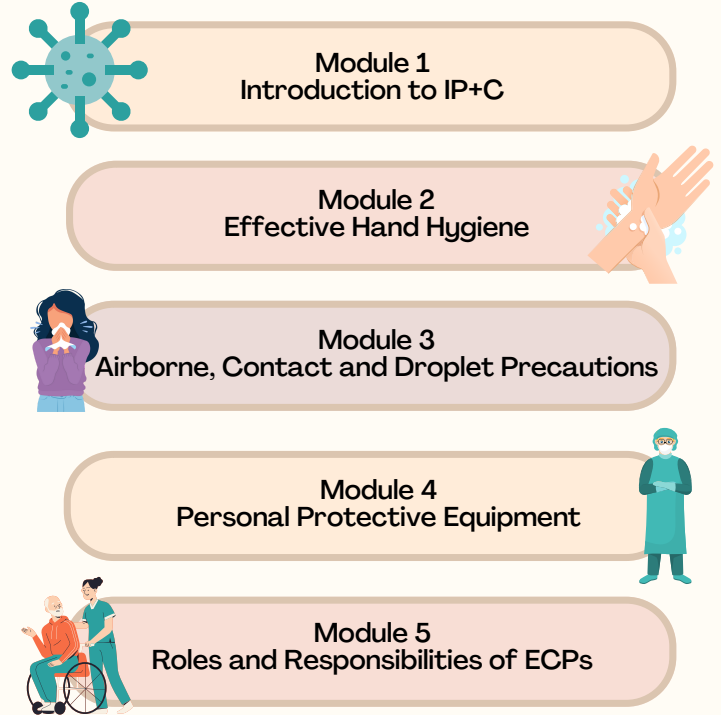
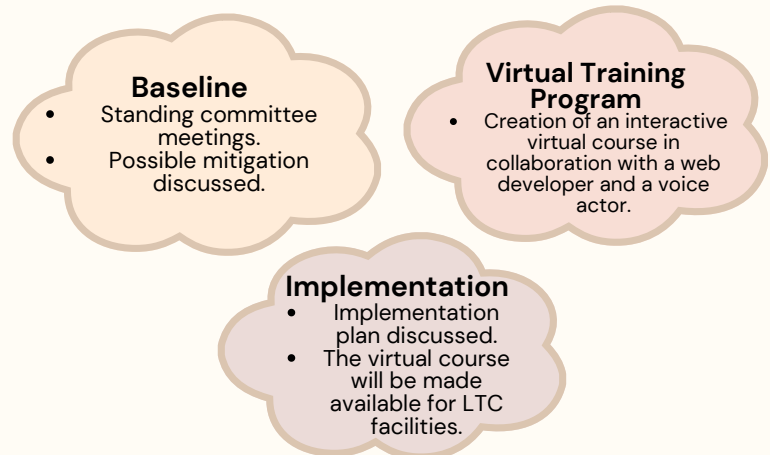


Figure 2. Intervention Description and Summary



Conclusion

Technology allowed us to implement an intervention that will:

- Foster a better environment in the LTC for staff members, ECPs and residents.
- Provide fundamental information about Infection Prevention and Control (IP+C) during COVID-19 and beyond.
- Equip ECPs with the knowledge needed to keep them and the care recipients safe.
- Allow learners to learn at their own pace, from anywhere and at any time.